

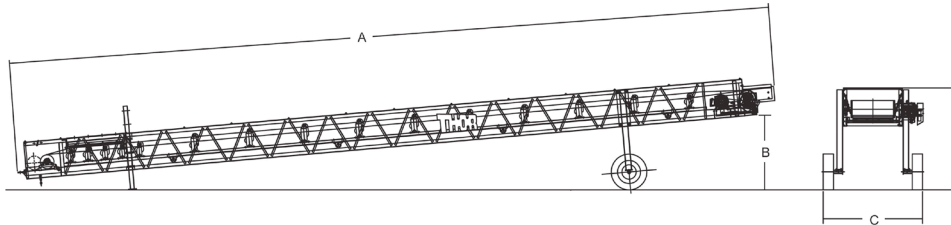
# TECHNICAL SPECIFICATIONS

PORTABLE TRANSFER CONVEYORS

## DRIVE, BELTING & PULLEY SPECIFICATIONS

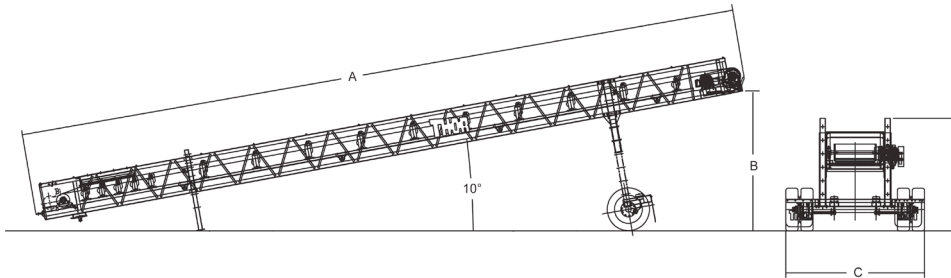
Model	Capacity	Motor	Reducer	Belting	Belt Speed	Head Pulley	Tail Pulley
SC55x36-0800 (Top)	800 STPH	15 HP	TXT415	36"x108' 330PIW 3 Ply	400 fpm	Ø14"x38", 1/2" Dia. Lag.	Ø12"x38"
SC55x36-0800 (Middle)	800 STPH	15 HP	TXT415	36"x108' 330PIW 3 Ply	400 fpm	Ø14"x38", 1/2" Dia. Lag.	Ø12"x38"
SC55x36-0800 (Bottom)	800 STPH	20 HP	TXT515	36"x108' 330PIW 3 Ply	400 fpm	Ø14"x38", 1/2" Dia. Lag.	Ø12"x38"

## TOP & MIDDLE CONVEYOR DIMENSIONS



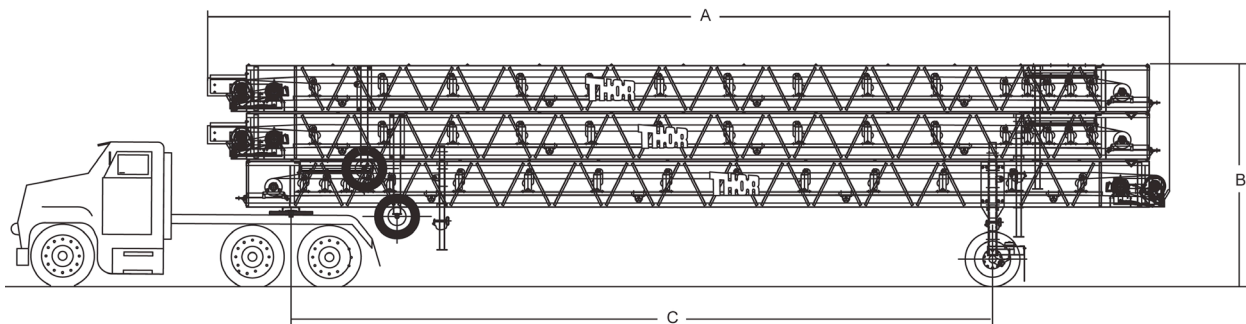
Model	A	B	C	D
SC55x36-0800	55'	6' - 0"	7' - 2"	7' - 4"

## BOTTOM CONVEYOR DIMENSIONS



Model	A	B	C	D
SC55x36-0800	55'	10' - 4"	10' - 5"	8' - 4"

## TRANSPORT DIMENSIONS



Model	A	B	C	Transport Width
SC55x36-0800	55' - 8"	12' - 10"	40' - 7"	10' - 5"