

The logo for Thor Global, featuring the word "THOR" in a large, bold, red, sans-serif font with a registered trademark symbol (®) to its upper right. Below "THOR" is the word "GLOBAL" in a smaller, black, all-caps, sans-serif font with wide letter spacing.

G L O B A L

A photograph of a port terminal under a clear blue sky. In the foreground, a large black ship is docked, with red shipping containers stacked on its deck. A complex network of metal gantries and conveyor systems spans across the ship and the terminal. The word "THOR" is visible in red on one of the gantries. The overall scene depicts a busy industrial port environment.

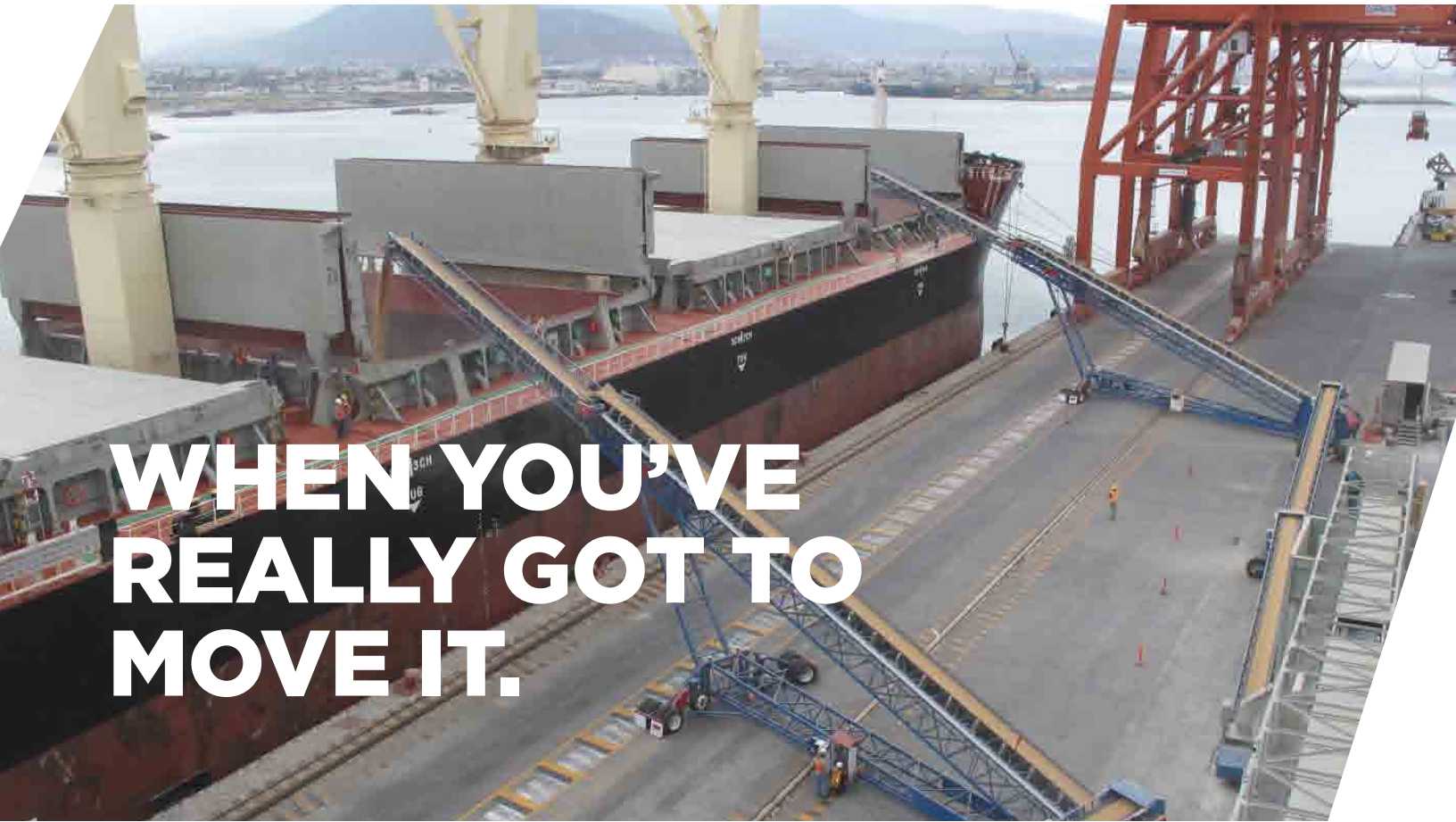
VERSATILE SOLUTIONS. FAST.

WHEN YOU'VE REALLY GOT TO MOVE IT.

A white arrow graphic pointing from the bottom left towards the center of the page, partially overlapping the dark background of the port terminal.

PORTS & TERMINALS

PORTS & TERMINALS VERSATILE SOLUTIONS. FAST.



**WHEN YOU'VE
REALLY GOT TO
MOVE IT.**

SHIP, BARGE AND RAIL SYSTEMS ARE SOME OF THE MOST ECONOMICAL MEANS OF TRANSPORTING BULK MATERIALS AROUND THE WORLD. Thor Global continues to develop new and innovative solutions that are focused to accommodate the time sensitive needs of port and terminal operations. All machines are designed with the perfect balance of weight and structure to provide the strongest machine possible.

KEY BENEFITS: TELESCOPIC TECHNOLOGY

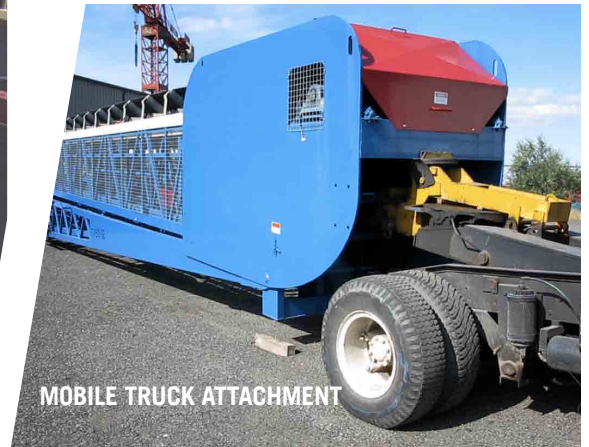
Telescopic technology provides a cost effective solution for port and terminal facilities due to versatility and high tonnage. The ability to control bulk material using telescopic technology is especially an asset for ship loading applications.

CONTROL & PRECISION

Ship loaders are faced with several challenges pertaining to the control of material. Not being able to load bulk material evenly on the vessel is a huge concern. Telescopic



DISCHARGE SPOUT: TELESCOPING



MOBILE TRUCK ATTACHMENT

technology provides operators with complete trimming and precise control of where material falls within each hold, maximizing space and volume on the vessel. Load the vessel evenly port to starboard, bow to stern.

PREVENT DEMURRAGE FEES

With conventional ship loading equipment, port facilities are often challenged with the need to move a vessel multiple times during the loading process. Telescopic extension enables operators to fill multiple holds from one single feed point without moving the vessel, minimizing potential demurrage charges. Portable units can also be moved onsite without the need to move the vessel making the loading process very fast and efficient.

DIVERSIFY YOUR PORT

Some port facilities need to diversify by providing multiple services and functions, which is why the versatility of a portable telescopic unit is such an asset to this industry. In just a few minutes the conveyor can be packed up and moved out of the way of the vessel when not in use. In more permanent scenarios,

ThorTowerStacker™ units can provide greater flexibility for function. No head undercarriage provides maximum clearance under the conveyor should space be required for driving trucks along side the vessel during loading.

KEY PRODUCTS

THORLOPRO™

low profile telescopic portable radial conveyor

THORLINKS™

portable transfer conveyor

THORSTACKER™

telescopic portable radial conveyor

THORSTACKABLE™

stackable portable transfer conveyors

THORTOPFOLD™

top fold portable radial conveyor

THORTOWERSTACKER™

telescopic cable mast conveyor

KEY FEATURES

- Belt covers: **patented**
- Galvanizing: hot-dip
- Mobile truck attachment
- Telescoping spout
- Wireless remote control